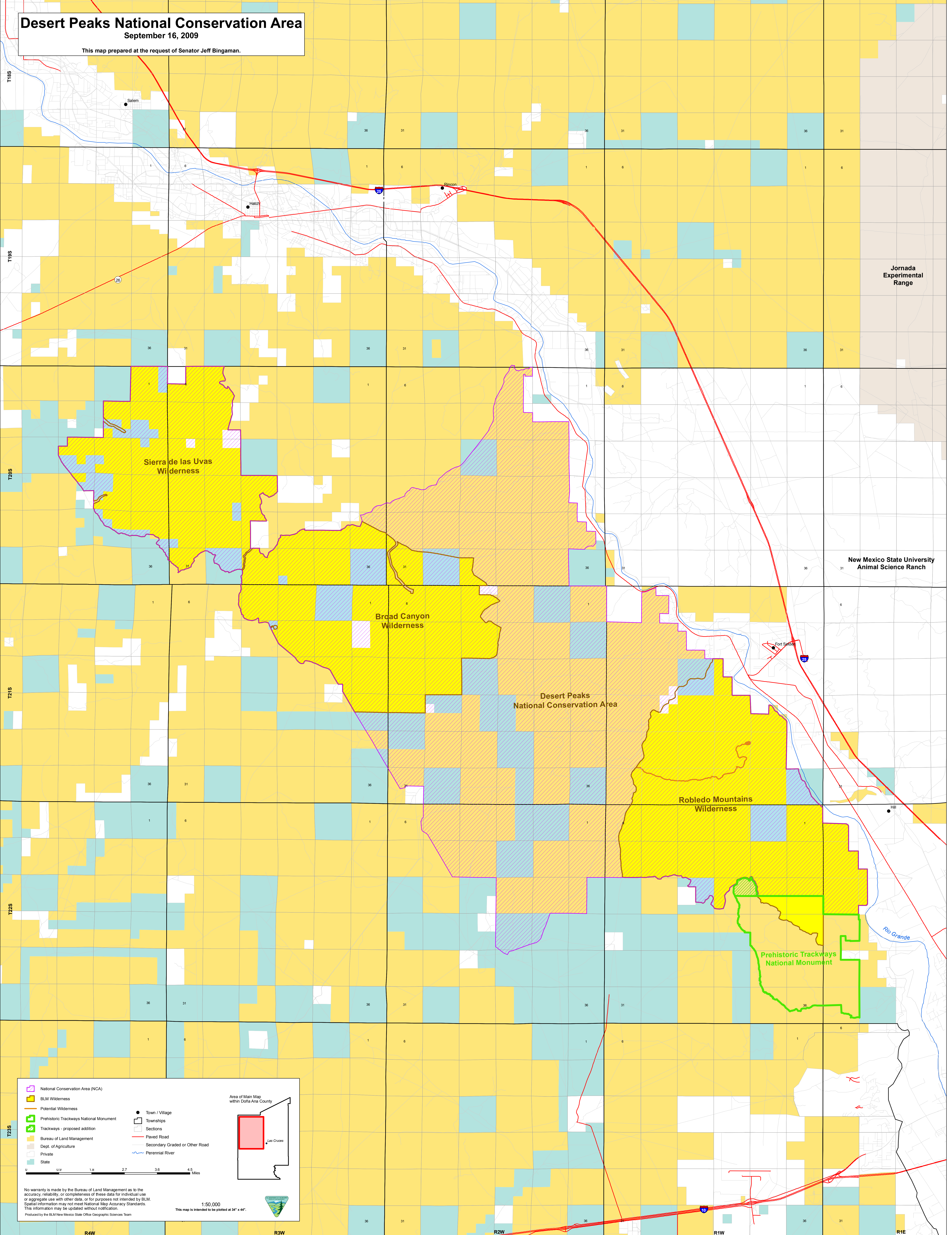


Desert Peaks National Conservation Area

September 16, 2009

This map prepared at the request of Senator Jeff Bingaman.



Jornada Experimental Range

New Mexico State University Animal Science Ranch

	National Conservation Area (NCA)		Town / Village
	BLM Wilderness		Townships
	Potential Wilderness		Sections
	Prehistoric Trackways National Monument		Paved Road
	Trackways - proposed addition		Secondary Graded or Other Road
	Bureau of Land Management		Perennial River
	Dept. of Agriculture		
	Private		
	State		

No warranty is made by the Bureau of Land Management as to the accuracy, reliability, or completeness of these data for individual use or aggregate use with other data, or for purposes not intended by BLM. Spatial information may not meet National Map Accuracy Standards. This information may be updated without notification.

1:50,000
 This map is intended to be posted at 34" x 44".

Produced by the BLM New Mexico State Office Geographic Sciences Team

R4W

R3W

R2W

R1W

R1E